

Name: *Galapagos enhanced trichomes (Get)*

Accessions: Tri5

Gene ID:

Map position: chromosome 2

Gene function:

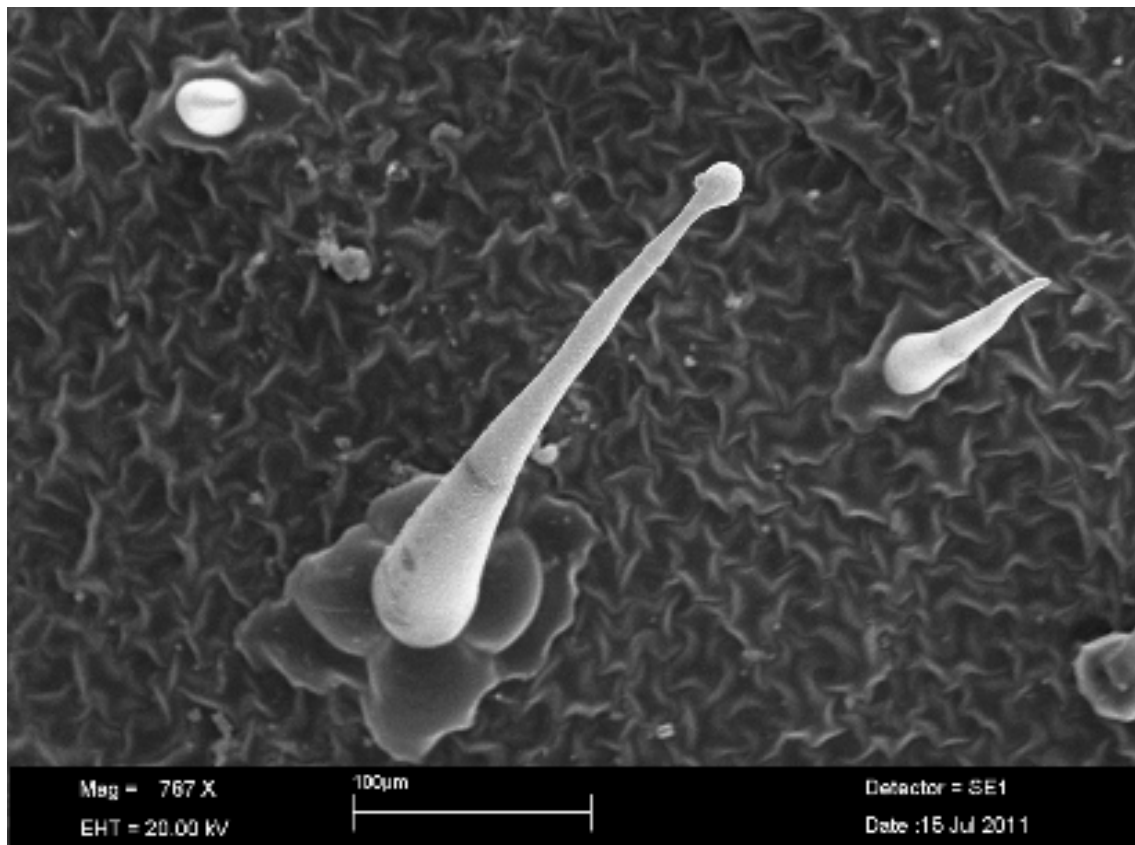
Gene effect: The dominant allele *Get* increases the number of glandular trichome type I.

Phenotypes: MT-*Get* has sticky leaves probably due to the large number of glandular trichomes producing allelochemicals.

Comments: some type I trichomes found in MT-*Get* are short and resembles type IV trichomes, but they have multicellular bases in opposite to the unicellular base present in type IV trichomes.

Description of accessions available: MT-*Get* is a BC6Fn from the cross *S. lycopersicum* cv MT x *S. galapagense* LA1401.

Figures:



Scanning electron micrograph of MT-Get adaxial leaf showing a type I glandular trichome with its characteristic multicelled base. Two unicelled-based type V non-glandular trichomes are also showed.

Bibliography