

Name: *Galapagos high brix (Ghb)*

Map position:

Gene function:

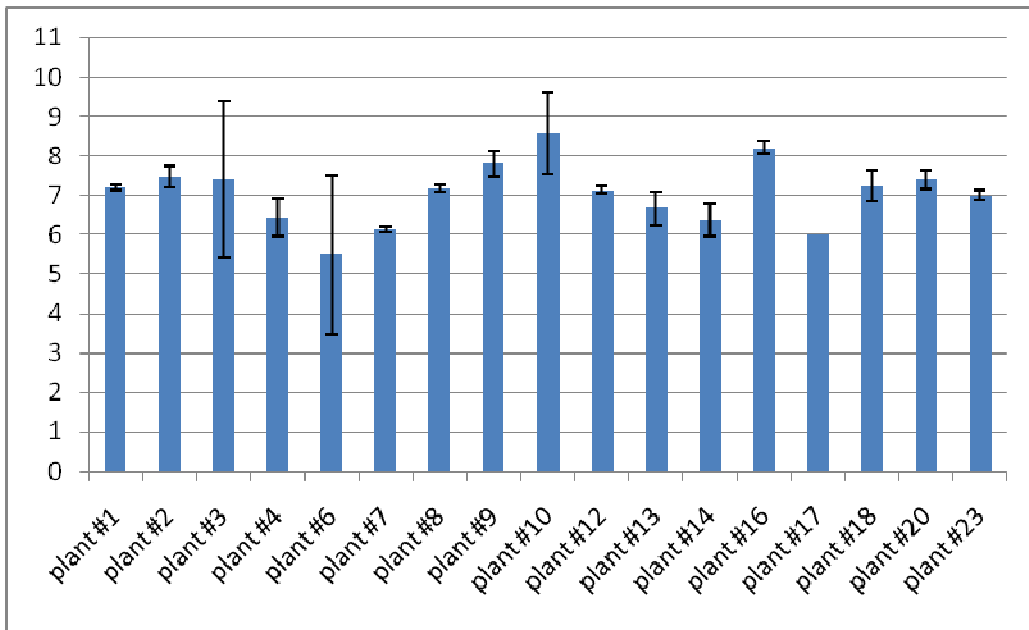
Gene effect:

Phenotypes: MT-*Ghb* presents high brix.

Description of accessions available: MT-*Ghb* is a BC6Fn introgressed from LA1401 (*S. galapagense*)

Comments: The parental LA1401 use to have a brix equal to 14. Thus, MT-*Ghb* is probably just one of the various loci controlling brix in *S. galapagense* (former *L. cheesmanii* f. *minor*).

Figures:



Total soluble solids content (Brix) from a segregating population from the cross MT-*Ghb* x MT

Bibliography

Nuez F, Prohens J, Blanca JM (2004) Relationships, origin, and diversity of Galápagos tomatoes: implications for the conservation of natural populations. *American Journal of Botany*, 91: 86–99.