

**Name:** *atropviolacium (atv)*

**Accessions:** Ph5 (LA4474)

**Gene ID:**

**Map position:** chromosome 7

**Gene function:**

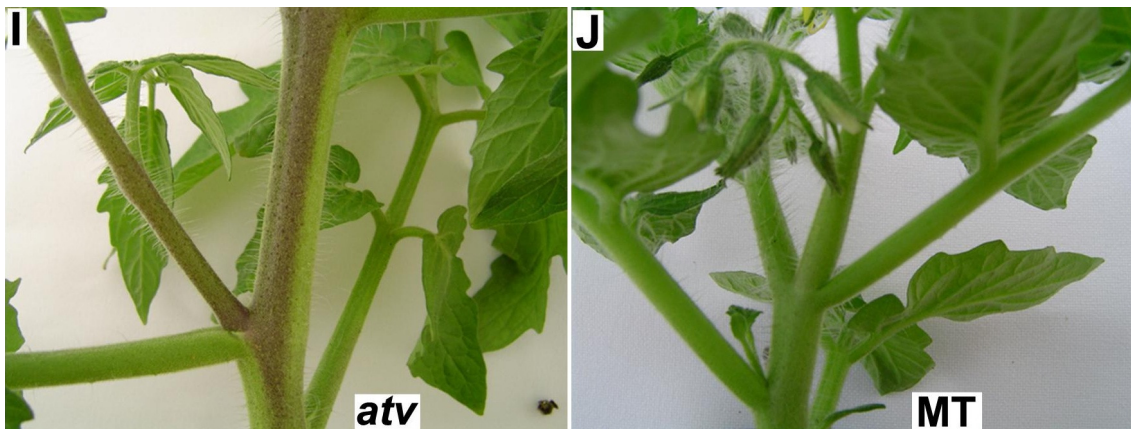
**Gene effect:**

**Phenotypes:** MT-*atv* presents excess anthocyanin on leaves, stems, and fruits

**Comments:**

**Description of accessions available:** MT-*atv* is a BC6Fn introgressed from LA0797

**Figures:**



MT-*atv* showing anthocyanin pigmentation in the stem.

## **Bibliography**

Carvalho RF, Campos ML, Pino LE, Lombardi-Crestana SL, Zsogon A, Lima JE, Benedito VA, Peres LEP (2011) Convergence of developmental mutants into a single tomato model system: Micro-Tom as an effective toolkit for plant development research. *Plant Methods*, 7:18.

Kendrick RE, Kerckhoffs LHJ, Pundsnes AS, Tuinen A, Koorneef M, Nagatani A, Terry MJ, Tretyn A, Cordonnier-Pratt MM, Hauser B, Pratt, LH (1994) Photomorphogenic mutants of tomato. *EUPHYTICA* 79:227-234

Kendrick RE, Kerckhoffs LHJ, Koorneef M, (1997) Photomorphogenic mutants of tomato. *Plant, Cell and Environment* 20:746-751