

Name: *entire* (e)

Accessions: H2

Gene ID: Solyc04g076850

Map position: chromosome 4 (long arm)

Gene function: *entire* codes for *AUX/IAA9*, a transcriptional repressor of auxin signaling

Gene effect: the mutated allele increases auxin response.

Phenotypes: MT-e presents simple leaves and parthenocarp.

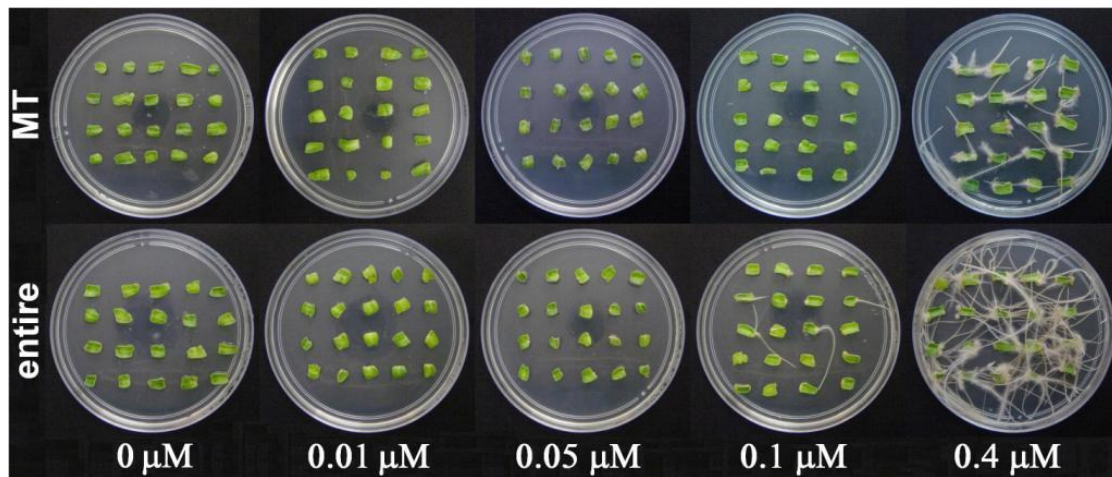
Comments:

Description of accessions available: MT-e is a BC6Fn introgressed from LA2922

Figures:



MT-e showing simple leaves



Cotyledonary explants of MT-*e* are more responsive to auxin (NAA) for root formation when compared to MT.

Bibliography

Butler L (1951) New linkage groups in the tomato. Jour. Hered. 42: 100-104.

Dengler, NG (1984) Comparison of Leaf Development in Normal (+/+), Entire (e/e), and Lanceolate (La/+) Plants of Tomato, *Lycopersicon esculentum* 'Ailsa Craig'. Botanical Gazette 145:66-77.

Koenig D, Bayer E, Kang J, Kuhlemeier C, Sinha N (2009) Auxin patterns *Solanum lycopersicum* leaf morphogenesis. Development 136: 2997-3006.

Wang H, Jones B, Li Z, Frasse P, Delalande C, Regad F, Chaabouni S, Latché A, Pech J, Bouzayen M (2005) The tomato Aux/IAA transcription factor IAA9 is involved in fruit development and leaf morphogenesis. Plant Cell 17: 2676-2692.

Zhang J, Chen R, Xiao J, Qian C, Wang T, Li H, Ouyang B, Ye Z (2007) A single-base deletion mutation in *SlIAA9* gene causes tomato (*Solanum lycopersicum*) entire mutant. Journal of Plant Research 120: 671-678.